

UNIQUELY DESIGNED FOR YOUR HOME

Aritco HomeLift Datasheet 2025

We know every home is unique, and your home is a special place for you. You have picked every colour, every piece of furniture and every bit of decoration to create a home that is designed for your family, for your life and for your comfort.

Aritco HomeLift is designed to be that extra feature of your home. It is decorative and is a spectacular design feature, which makes your home unique. It provides you with that extra feeling of luxury, and it ignites the full potential of your home.

Accessible online via Aritco SmartLift.

For more information please visit [aritco.com](https://www.aritco.com)



Aritco Lift AB
Elektronikhöjden 14, Box 516
175 26 Järfälla, Sweden

T: +46 (0) 8 120 401 00
E: info@aritco.com
www.aritco.com

Explore

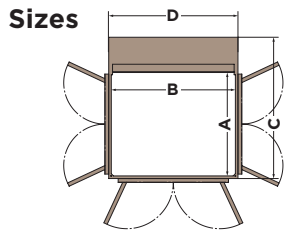
Aritco HomeLift



ARITCO LIFT 2024 SEP - English

Key features and customization possibilities

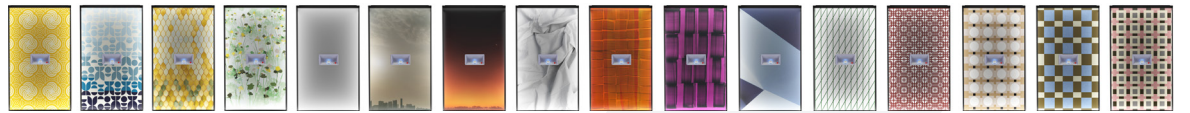
Aritco HomeLift comes with luxury design features like the DesignWall, a backlit wall with selected art from prominent Scandinavian designers or you can select your own personal picture. The DesignLight, with state-of-the-art lighting that you can control via the SmartLift app. Select between white cool and warm light and colored light. The Ceiling has two light pattern to select from, Stars and Sphere. Walls can be delivered in clear or tinted glass, and for the clear glass with a Mesh or Diamond pattern. Choose from 9 floorings, 16 lift colors, 4 control panel colors and covering panels in wood or concrete look-a-like material. The lift is SmartLift enabled which means you also get live status information in the SmartApp and the maintenance provider can get access to a Fleet management system for remote monitoring and support of the lift. The SmartSafety system, with safety features that anticipate situations and prevent accidents.



| MODEL | CARRIER SIZE (AxB) | EXTERIOR DIMENSIONS (CxD) | RATED LOAD |
|------------|--------------------|---------------------------|--------------------|
| S5 | 600 x 830 mm | 966 x 880 mm | 250 kg / 2 persons |
| S8 | 1000 x 830 mm | 1366 x 880 mm | 250 kg / 3 persons |
| S9 | 1100 x 830 mm | 1466 x 880 mm | 250 kg / 3 persons |
| S12 | 1000 x 1200 mm | 1366 x 1250 mm | 400 kg / 5 persons |
| S15 | 1100 x 1400 mm | 1466 x 1450 mm | 400 kg / 5 persons |

DesignWall

Select a predefined or a personal picture



Lift color



Glass



Floor



Intended use

Installations in private homes
Indoor installation environments

Technical compliance

European Machine Directive 2006/42/EC
European Standard EN 81-41

Drive system

Patented screw-and-nut system

Rated speed

Max 0.15 m/s inside Europe
Max 0.30 m/s outside Europe

Emergency lowering

Battery-powered

Travel height

500 - 15 000 mm inside Europe
500 - 18 000 mm outside Europe

Top height

Min. 2 225 mm to 4 000 mm

Number of floors

2 to 6 floors

Installation

Recessed installation 37 mm below floor level
Installed directly on the floor with a ramp

Operation

Hold to run (press and hold)
One-touch operation (press one time) for installations outside Europe

Power supply

230 V 1-phase,
400 V 3-phase

Warranty

Aritco HomeLift comes with a 5-year product warranty and a 10-year drive technology warranty.

